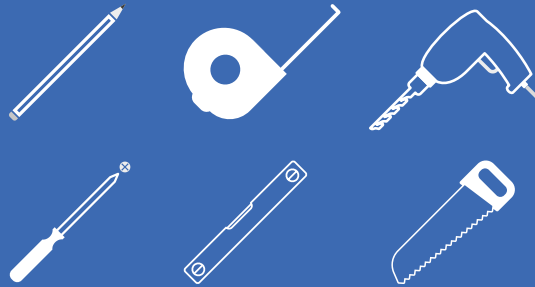


HOW TO FIT LINERS

Assembly Instructions

TOOLS REQUIRED:

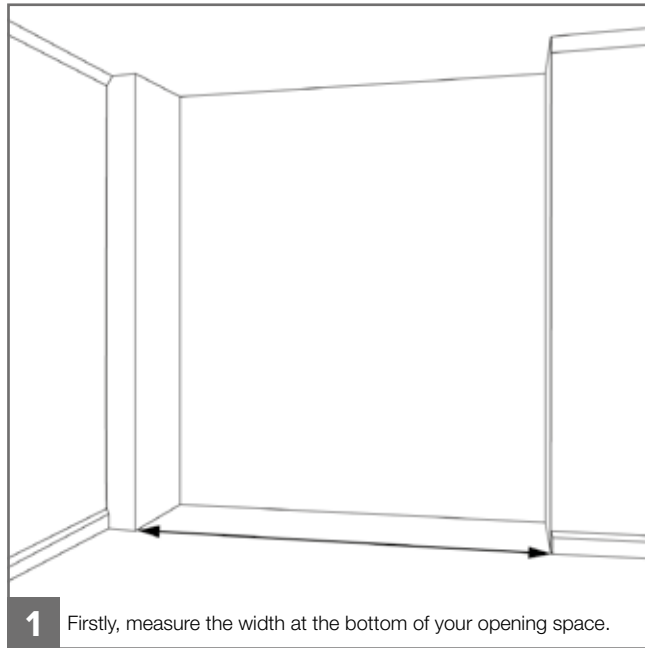


! Please check your opening for any hidden electrical wires and water pipes before / screwing.

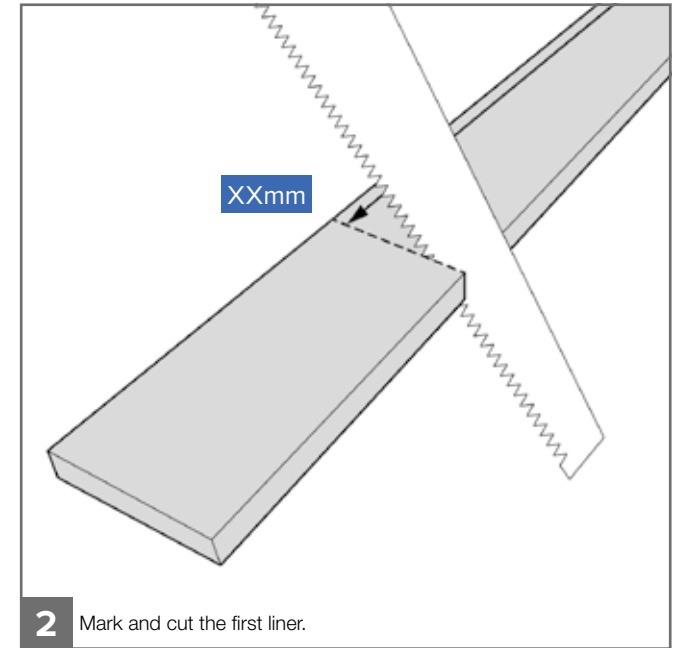
⊘ Screws not supplied. Use suitable screws and plugs.

SCREWFIX
wardrobes.com

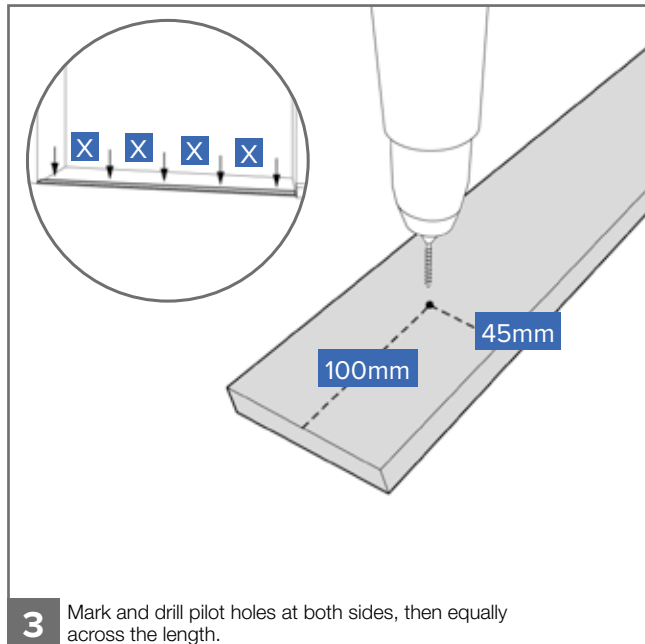
V1



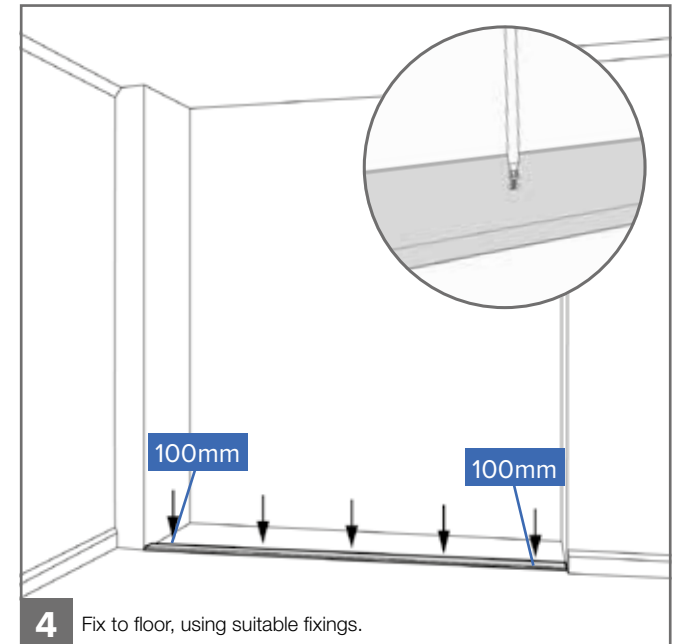
1 Firstly, measure the width at the bottom of your opening space.



2 Mark and cut the first liner.



3 Mark and drill pilot holes at both sides, then equally across the length.



4 Fix to floor, using suitable fixings.

