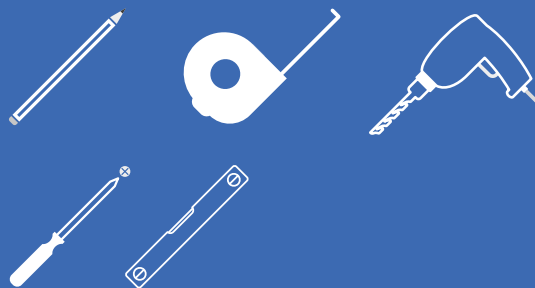


HOW TO FIT SLIDING GLASS DOORS

Assembly Instructions

TOOLS REQUIRED:



! Please check your opening for any hidden electrical wires and water pipes before / screwing.

SCREWFIX
wardrobes.com

V1

⚠ WARNING ⚠

When broken, toughened glass shatters into small, blunt-edged fragments which reduce the risk of personal injury.

Caution should be used during assembly and installation to ensure that the glass is not impacted by metal objects which can cause this shattering to take place. If in any doubt, we recommend a professional glass installer should be used.

HEALTH & SAFETY

- The doors are a minimum 2 person lift
- Do not let the corners and edges of the glass come into contact with floors or walls
- Do not hit the corners of the glass especially when unprotected
- Use all required gaskets and washers
- Do not over tighten hinges and brackets onto the glass.



TWO PERSON
LIFT



FRAGILE
GLASS



STORE THIS
WAY UP



NO IMPACT
ON CORNERS

PARTS INCLUDED:



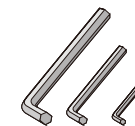
Wall Plugs
for wall & guide



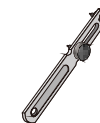
Screws for wall
ST4.8x50



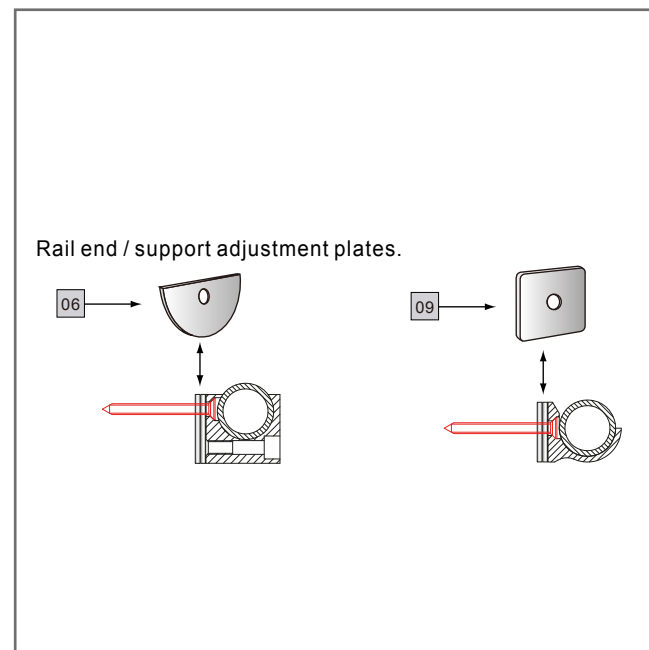
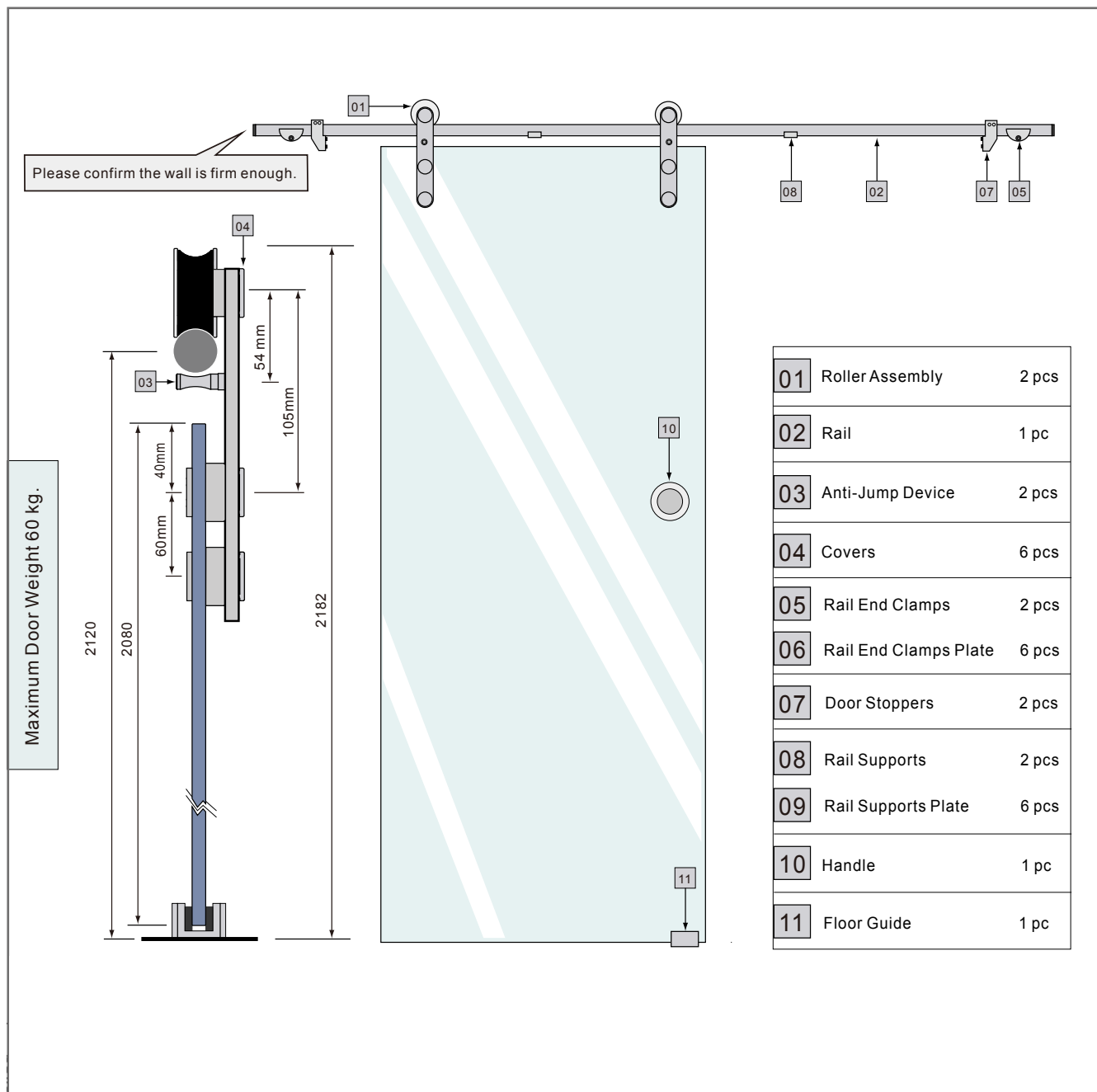
Screws for floor
guide ST4 8x35



Allen Keys
3, 5 & 8mm



Adjustable Pin
Wrench

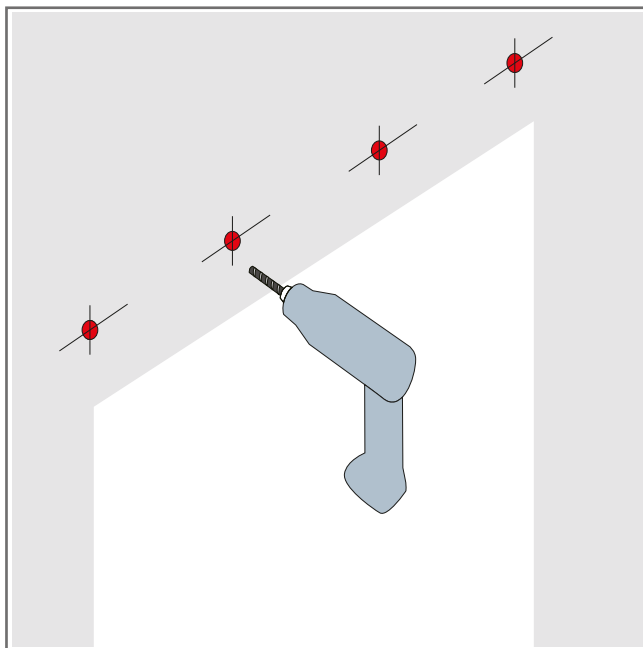


⚠ WARNING ⚠

When measuring and positioning the fixings, to ensure there is no contact between the glass and floor, make sure the clearance is equal along the entire length of the track. Inline with the diagram on page 1.

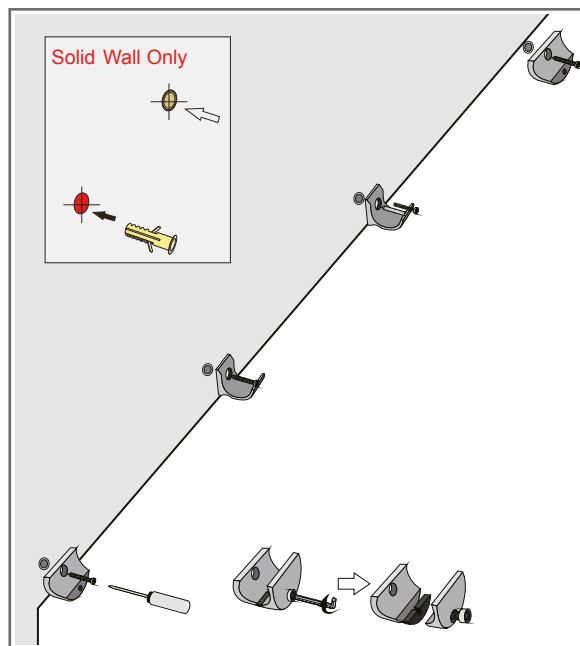
Important!

This system should be attached to a solid wall using appropriate fixings or A suitably reinforced stud wall.

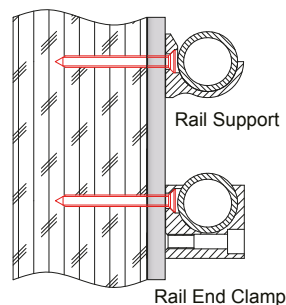


Mark the height required for the wall fixings (see page 1). The centre of rail clamp hole should be 7.5cm from the required rail end, with each subsequent hole being 55cm from the centre of the last. For solid wall, holes should be 8mm diameter and 50mm deep.

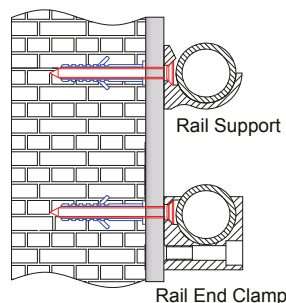
For stud wall, holes should be 3.5mm diameter and 50mm deep. It is very important that these holes are exactly level.



Stud Wall



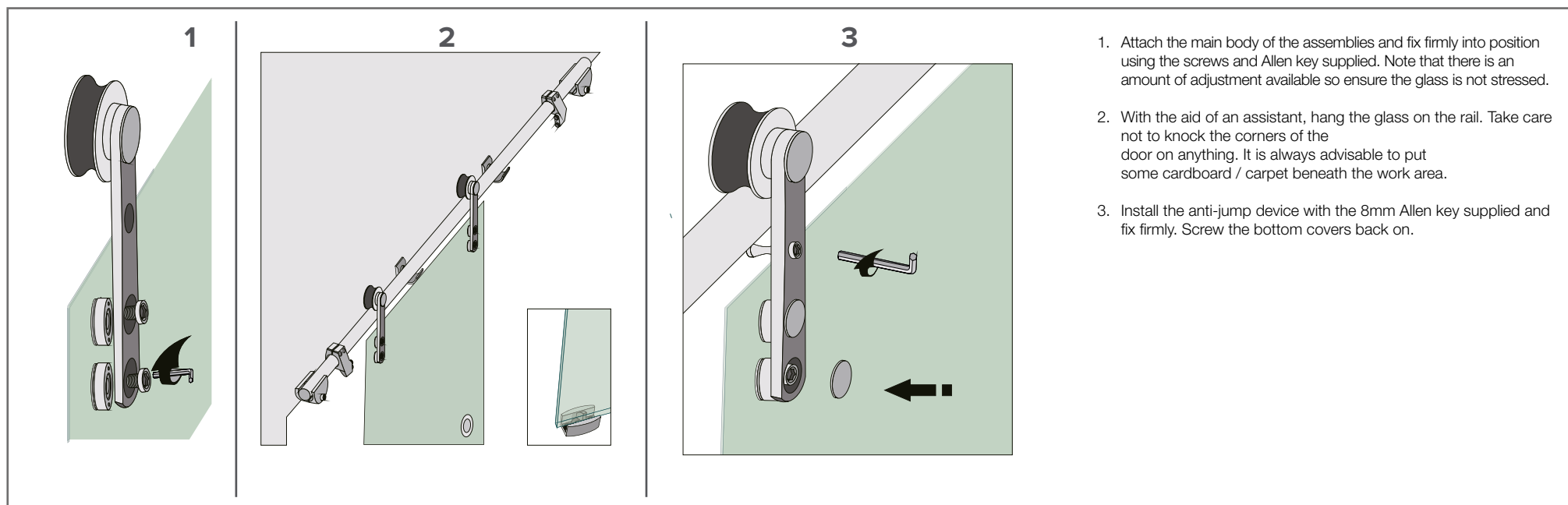
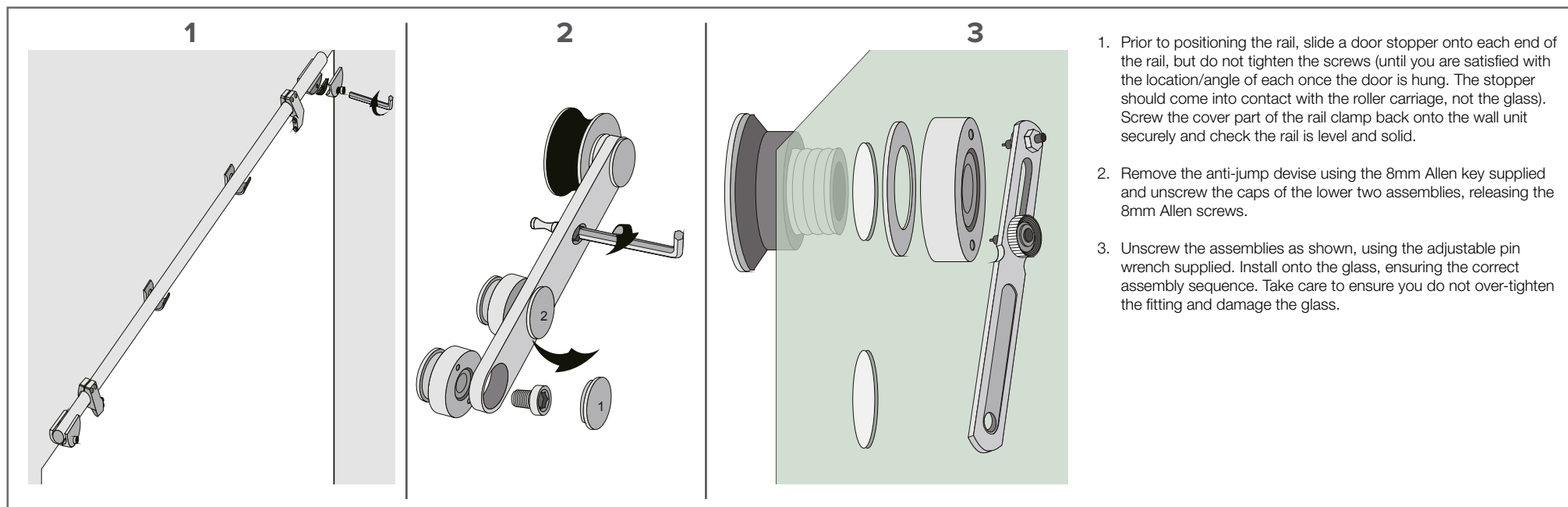
Solid Wall

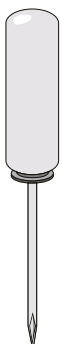


Solid walls only – Insert wall plugs into holes.

Attach the rail end clamps using the screws supplied. Note - You will need to separate the two halves of the end clamp prior to positioning onto the wall.

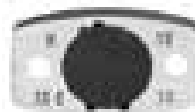
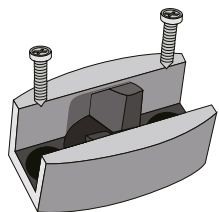
If walls are uneven, the appropriate metal plates for both rail support and rail end clamp can be used to pack out the fixing and keep the rail perfectly straight and level.





FLOOR GUIDE

Fix the door guide to the floor, approx 19mm from the walls to the centre of the fixing holes assuming a flush wall. Allowances will have to be made for any architrave/skirting if fitted. The guide should be positioned just before the wall opening in the approximate centre of the door movement.

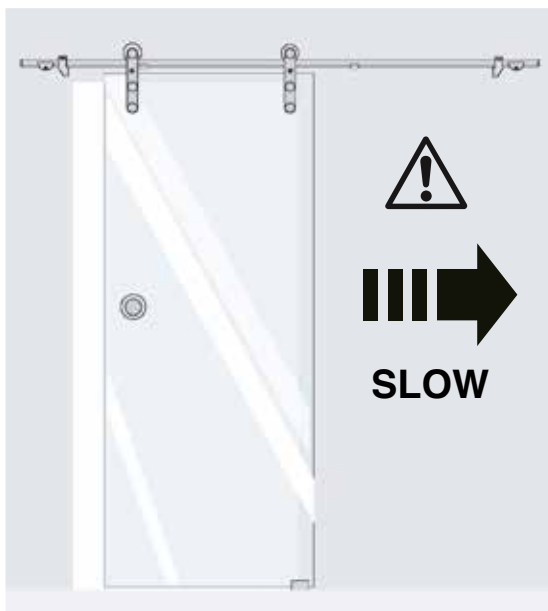
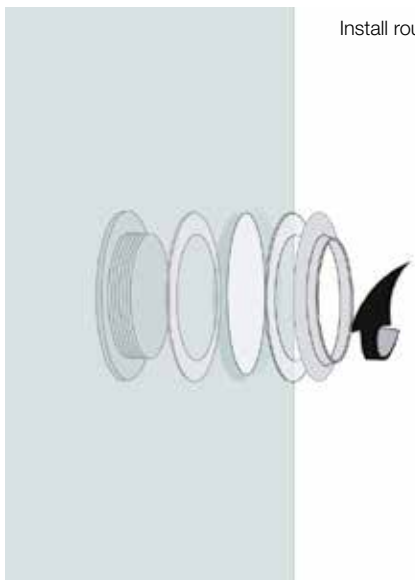


FLOOR GUIDE

Ensure the floor guide is set correctly for 8mm glass. If it needs adjustment, push the plastic part partially out of the metal and turn until the 8mm position is achieved. Push back into metal part.



Install round handle.



On the first movement of the door, run it slowly to ensure there is no contact between the glass, fixings, wall and floors.

PLEASE NOTE YOU ARE RESPONSIBLE FOR THE CORRECT INSTALLATION OF THIS UNIT SO PLEASE ENSURE YOU PAY PARTICULAR ATTENTION TO THESE INSTRUCTIONS AND THOSE THAT ARE SUPPLIED WITH THE GLASS DOOR.