

TOWER UNIT 3 & 4 DRAWERS

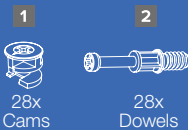
(400 & 600mm wide)

Assembly Instructions

CONTENTS:

- | | |
|---|-------------------------------|
| A 1x Top panel | I Drawer sides (left) |
| B 1x Side panel (left) | 3 Drawer Unit |
| C 1x Side panel (right) | • 3x left |
| D 5x Shelves
(4x for 4 drawers) | 4 Drawer Unit |
| E 1x Plinth panel | • 4x left |
| F Soft close drawer runners | J Drawer sides (right) |
| 3 Drawer Unit | 3 Drawer Unit |
| • 3x left, 3x right | • 3x |
| 4 Drawer Unit | 4 Drawer Unit |
| • 4x left, 4x right | • 4x |
| G Soft close clips | K Drawer bases |
| 3 Drawer Unit | 3 Drawer Unit |
| • 3x left, 3x right | • x3 |
| 4 Drawer Unit | 4 Drawer Unit |
| • 4x left, 4x right | • x4 |
| H Drawer backs | L Drawer fronts |
| 3 Drawer Unit | 3 Drawer Unit |
| • x3 | • x3 |
| 4 Drawer Unit | 4 Drawer Unit |
| • x4 | • x4 |
| | M Drawer handles |
| | 3 Drawer Unit |
| | • x3 |
| | 4 Drawer Unit |
| | • x4 |

TOWER UNIT PACK



DRAWER PACK

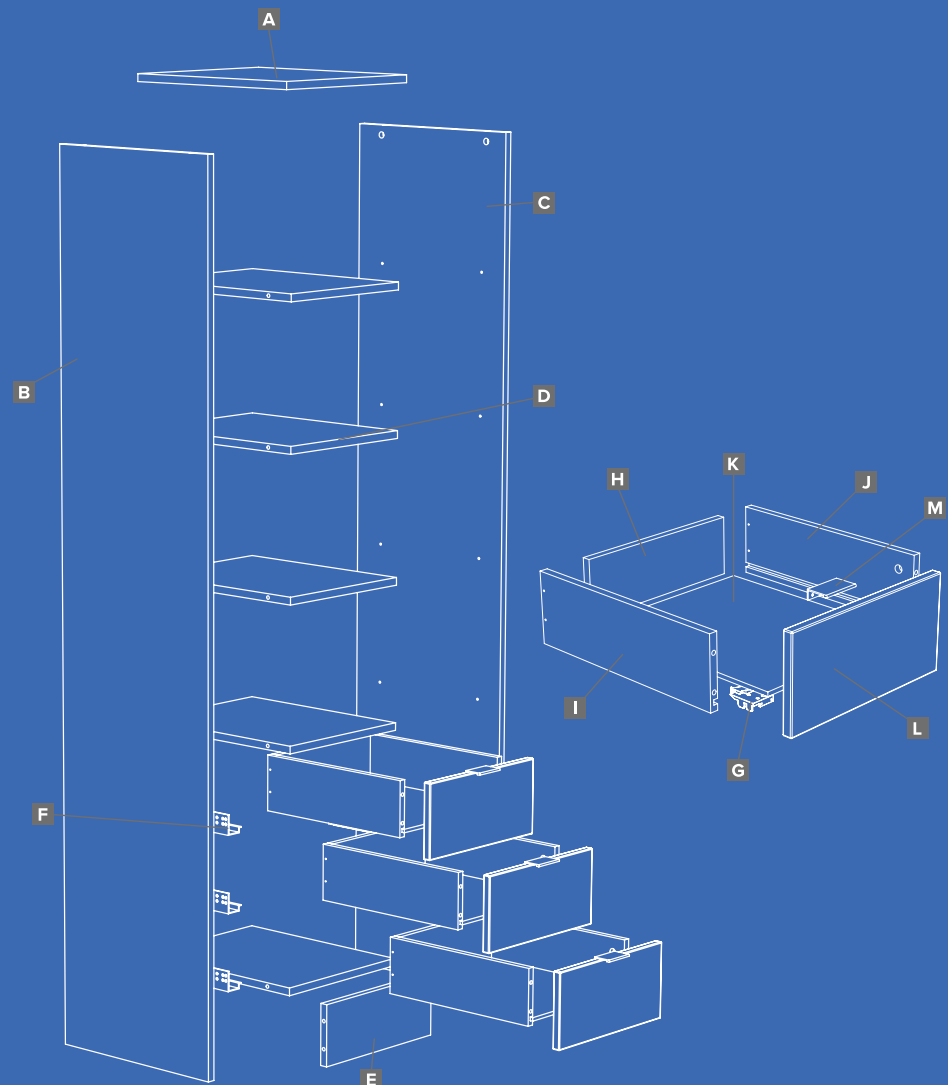


RECOMMENDED:

- TOOLS: Screwdriver
- TWO PERSON BUILD



We recommend you use the Wall Mounting Brackets provided to fix the Tower Unit to a wall (where possible). This will prevent the unit being pulled over. Use suitable fixings.

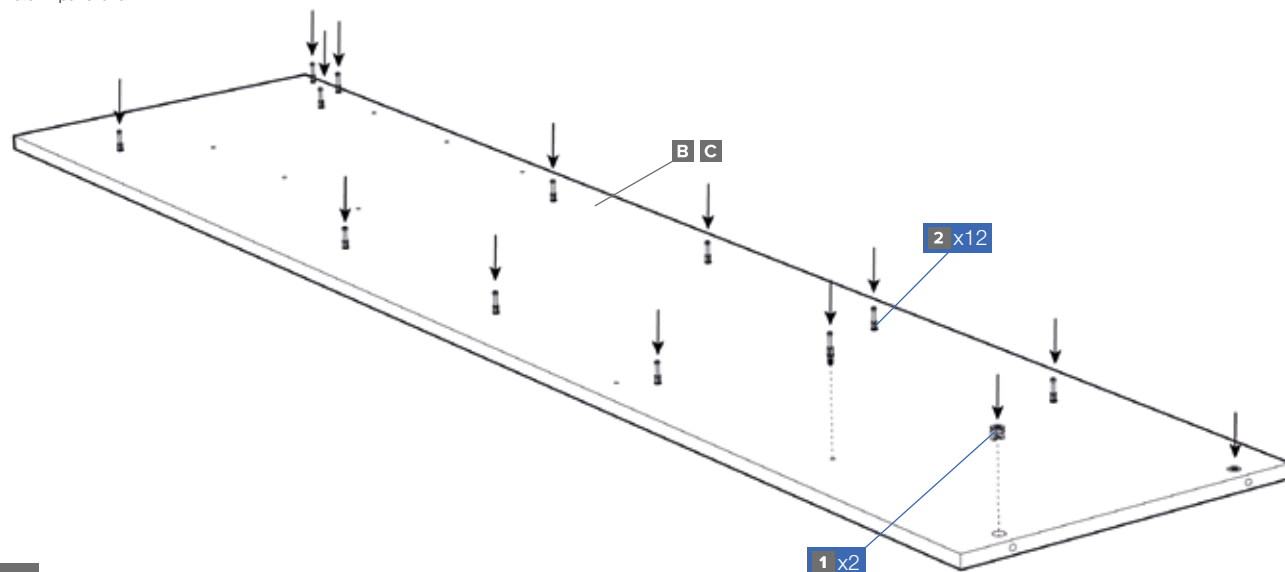


SCREWFIX
wardrobes.com

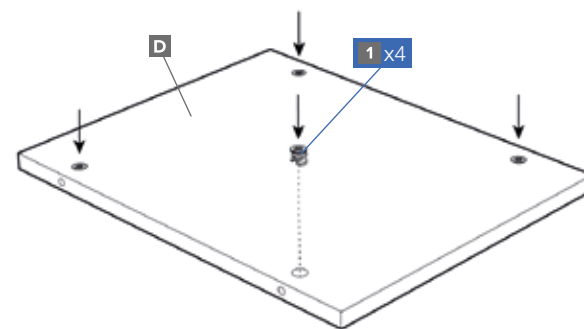
V1

PLEASE NOTE THE 3 AND 4 DRAWER TOWER UNIT ARE THE SAME IN CONSTRUCTION. WE HAVE USED THE 3 DRAWER TOWER UNIT AS AN EXAMPLE.

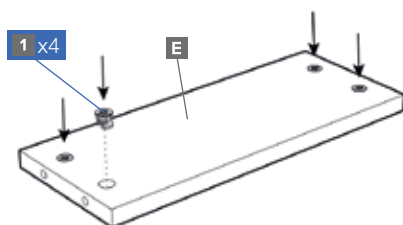
Note: B panel shown



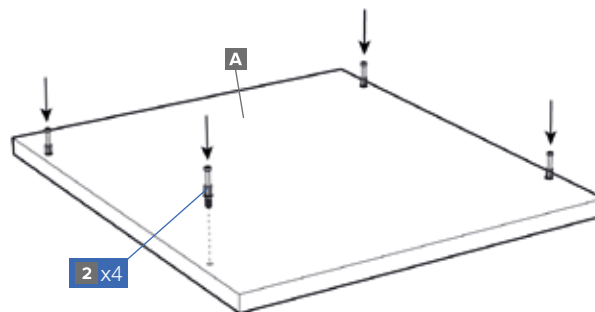
1 Lay panels (B & C) on a flat surface. Fit cams & dowels to both panels.



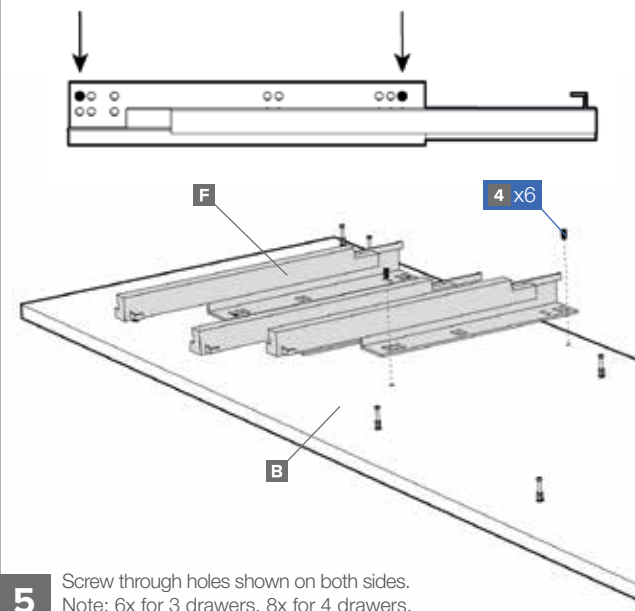
2 Apply to all panels (x5 – 3 drawers, x4 – 4 drawers).



3

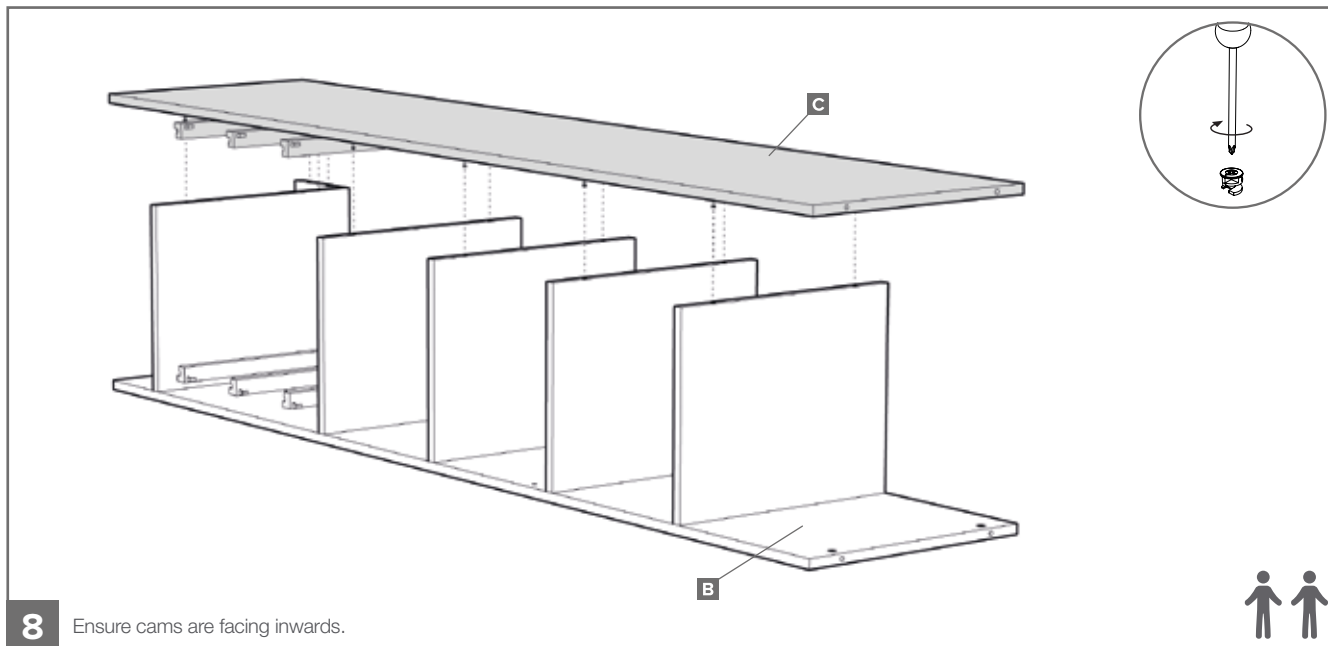
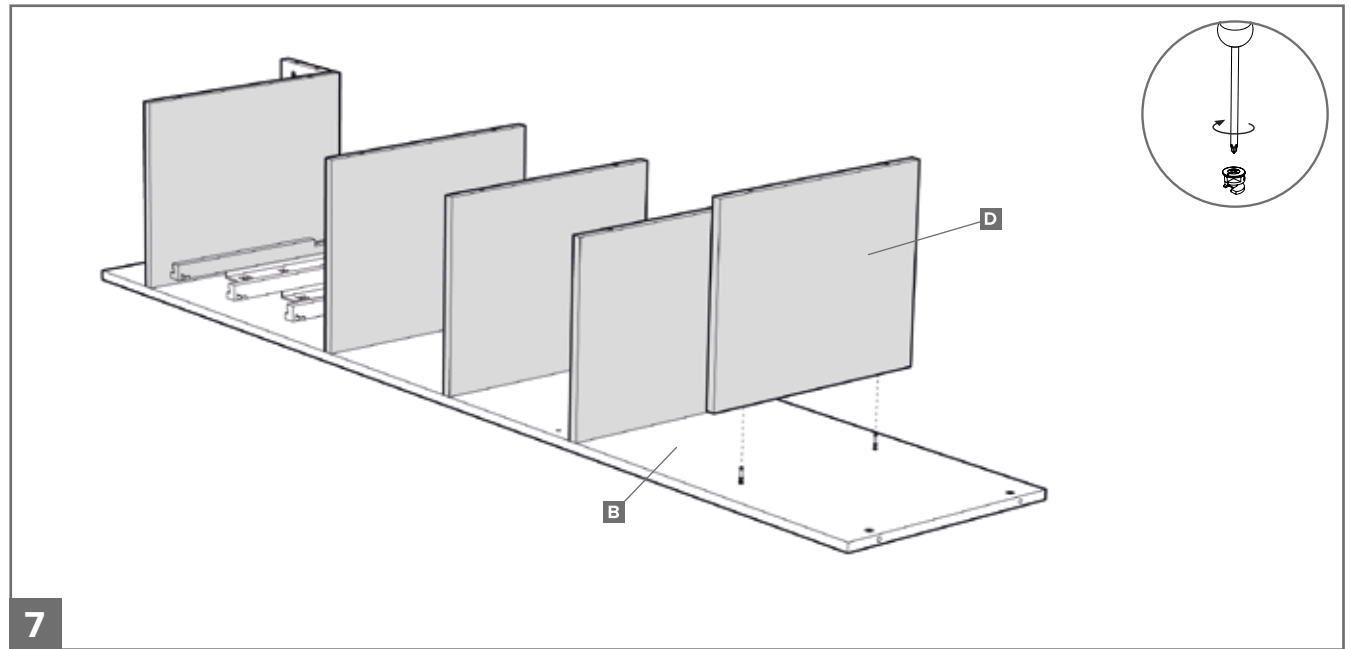
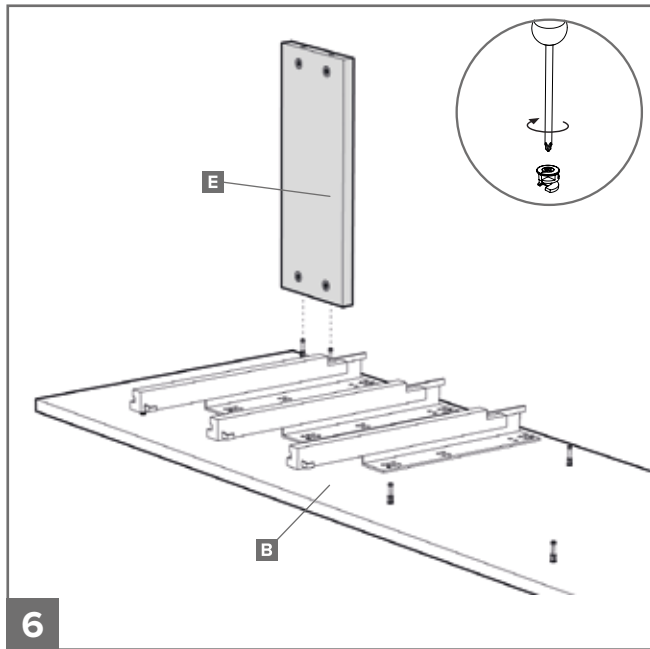


4

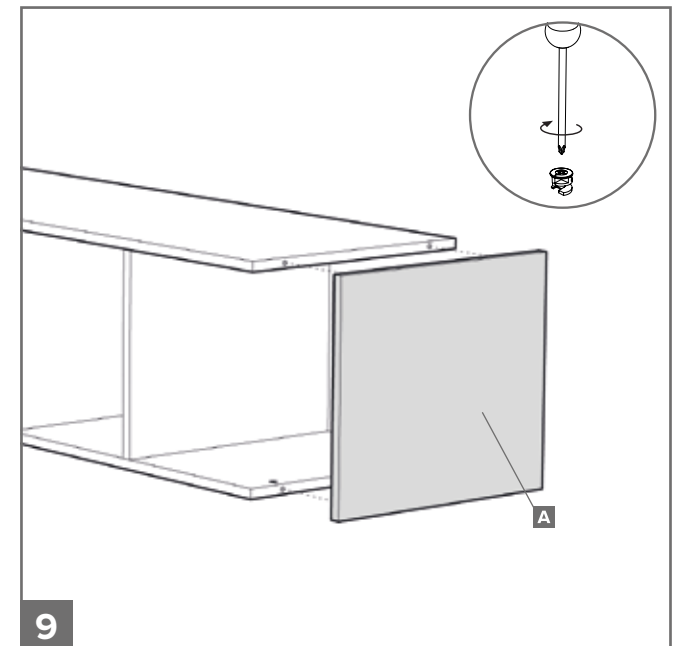


5 Screw through holes shown on both sides.
Note: 6x for 3 drawers, 8x for 4 drawers.

PLEASE NOTE THE 3 AND 4 DRAWER TOWER UNIT ARE THE SAME IN CONSTRUCTION. WE HAVE USED THE 3 DRAWER TOWER UNIT AS AN EXAMPLE.

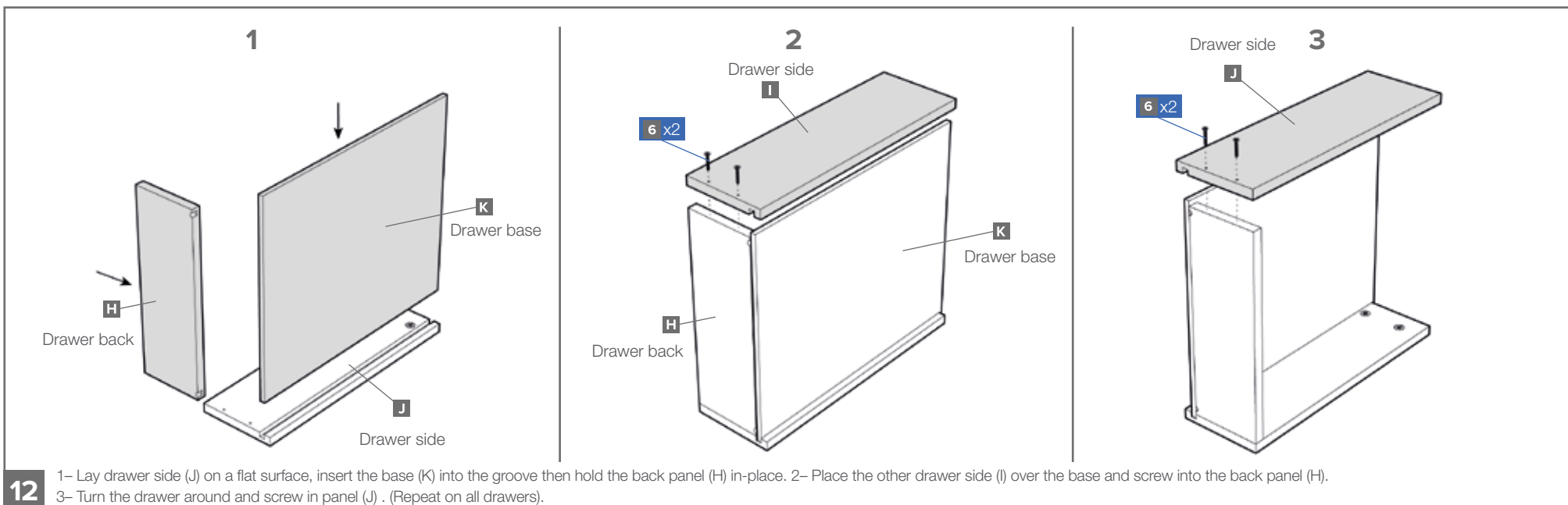
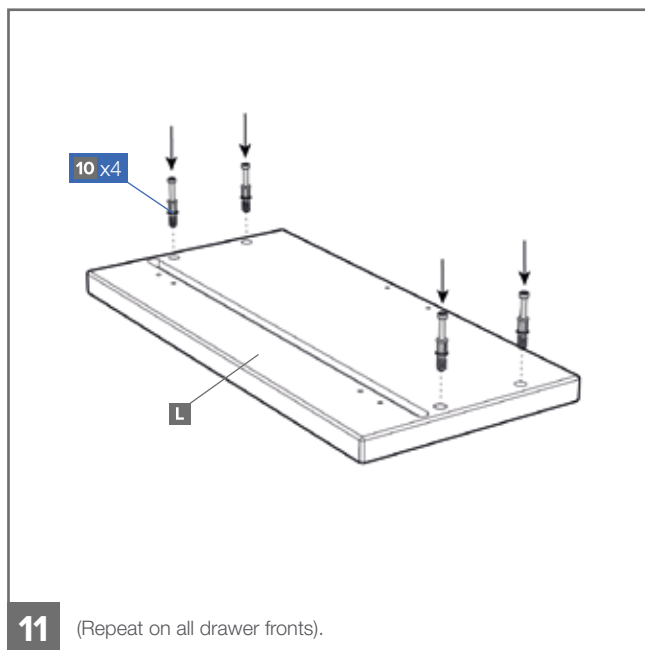
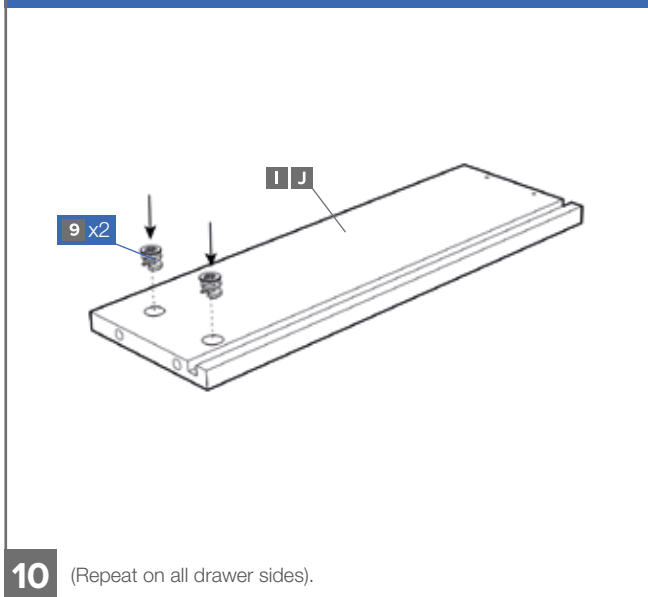


Ensure cams are facing inwards.

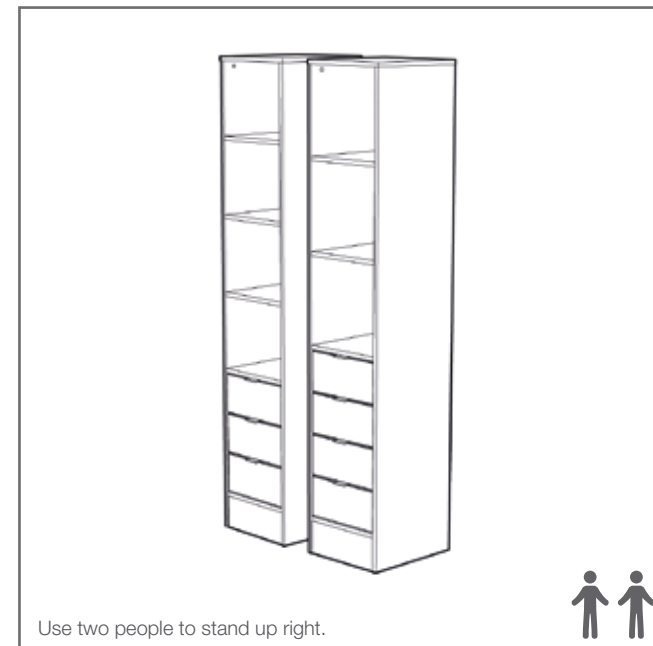
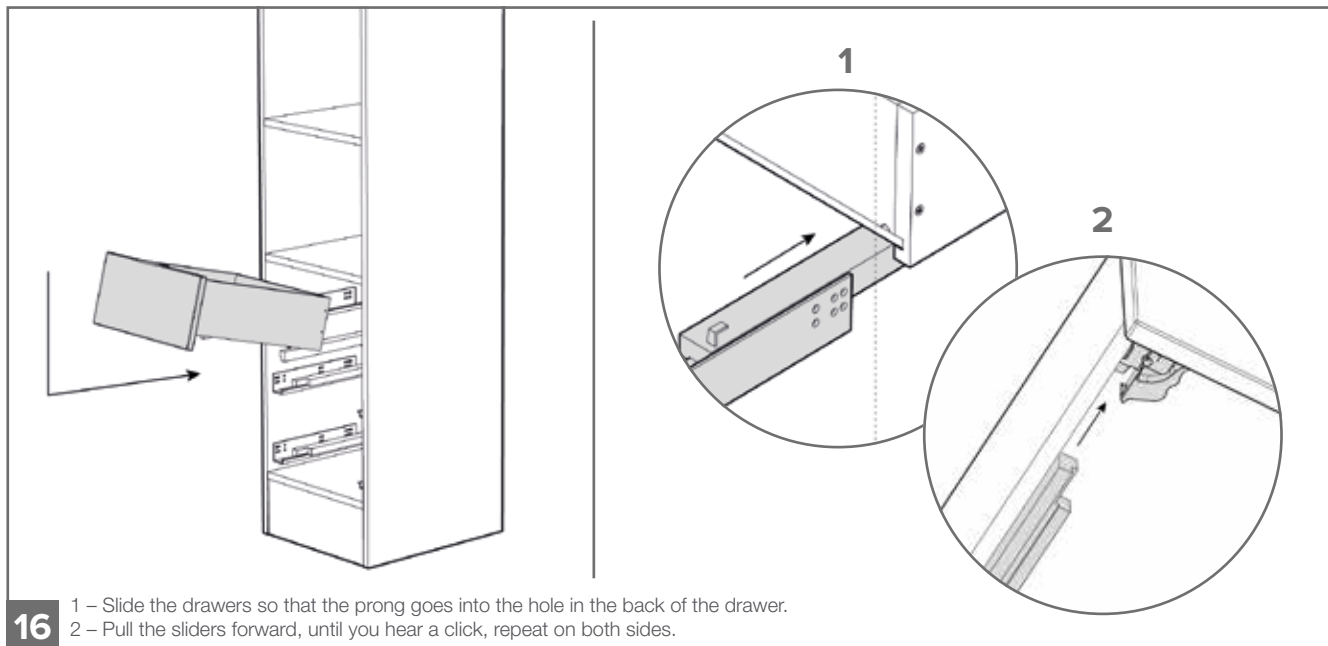
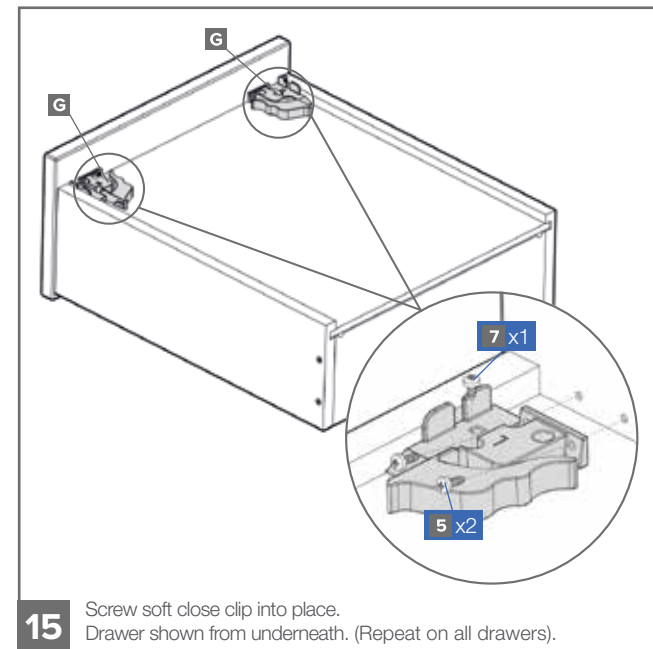
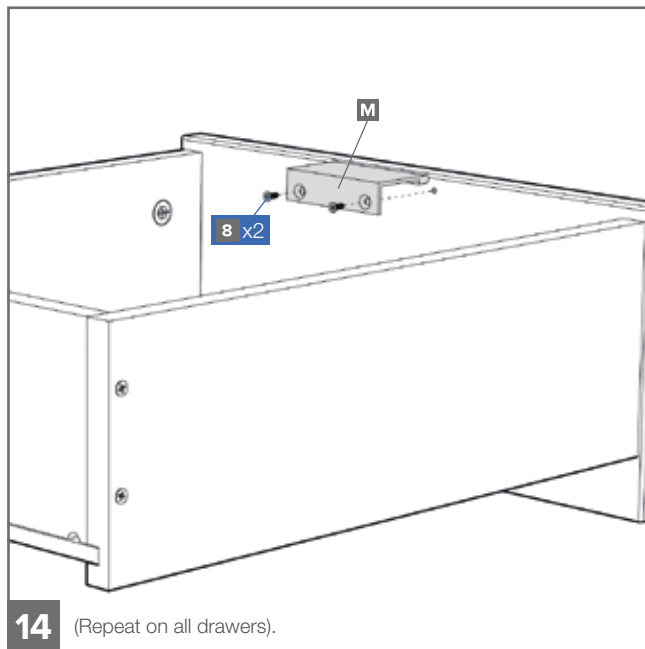
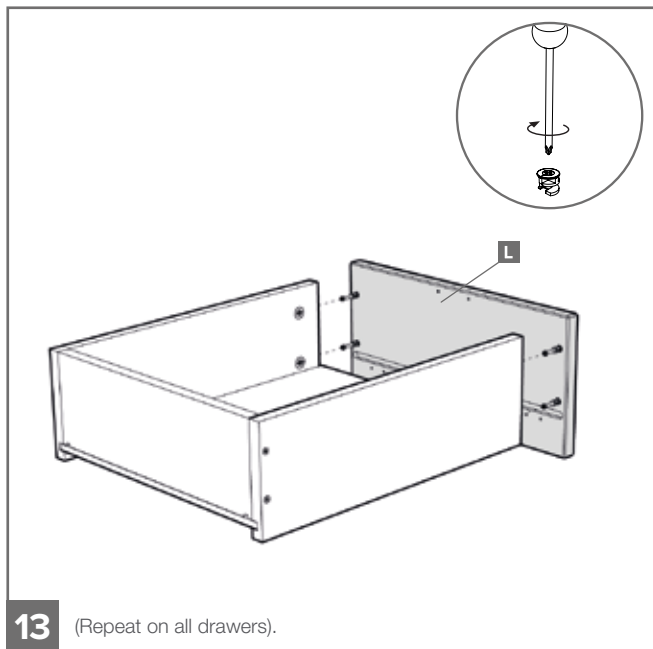


PLEASE NOTE THE 3 AND 4 DRAWER TOWER UNIT ARE THE SAME IN CONSTRUCTION. WE HAVE USED THE 3 DRAWER TOWER UNIT AS AN EXAMPLE.

MAKING THE DRAWERS



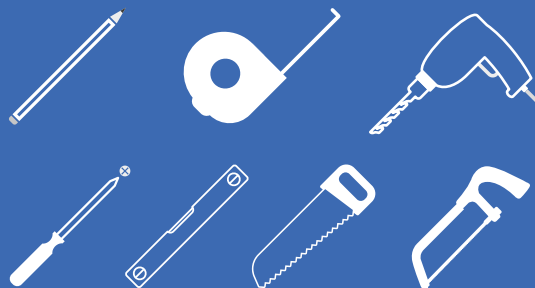
PLEASE NOTE THE 3 AND 4 DRAWER TOWER UNIT ARE THE SAME IN CONSTRUCTION. WE HAVE USED THE 3 DRAWER TOWER UNIT AS AN EXAMPLE.



HOW TO FIT TOWER UNIT

Assembly Instructions

TOOLS REQUIRED:

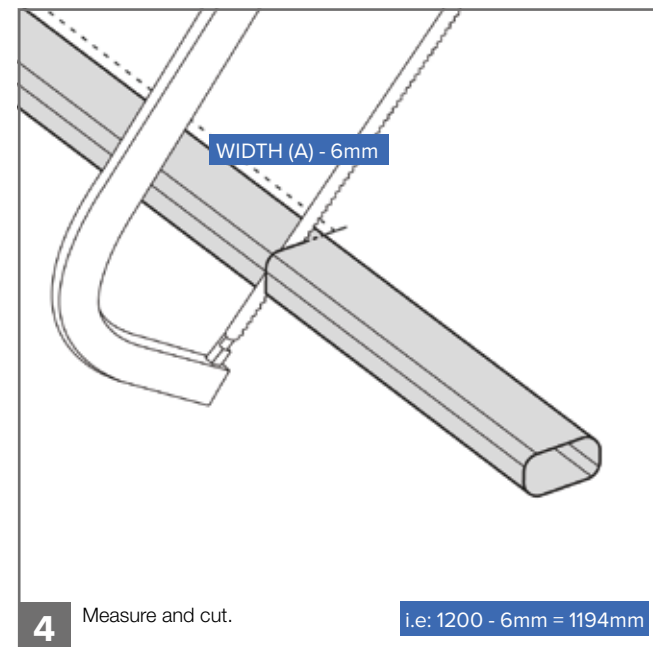
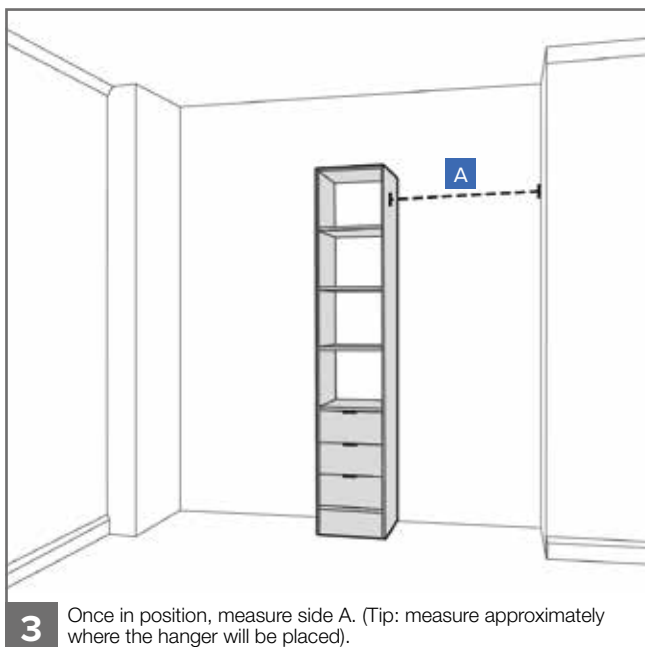
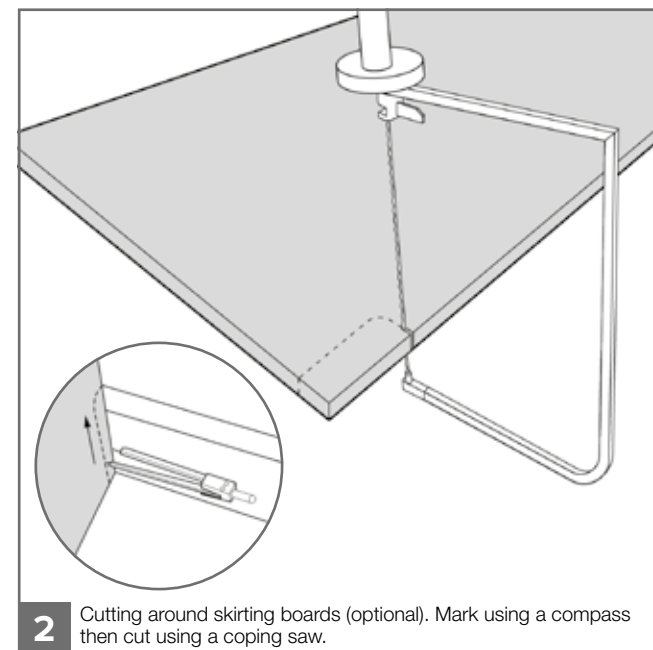
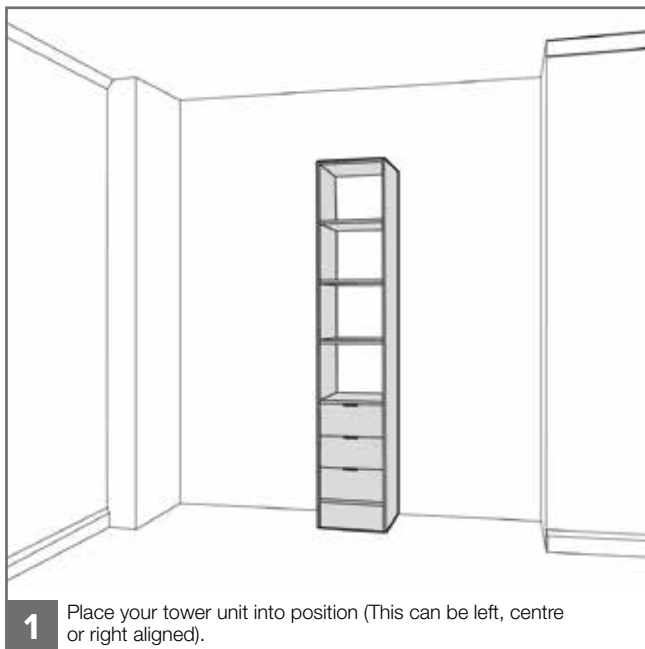


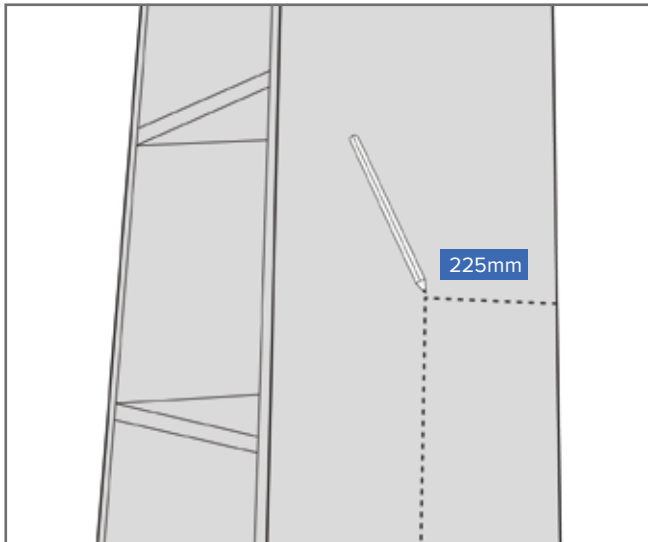
! Please check your opening for any hidden electrical wires and water pipes before / screwing.

⊘ Screws not supplied. Use suitable screws and plugs.

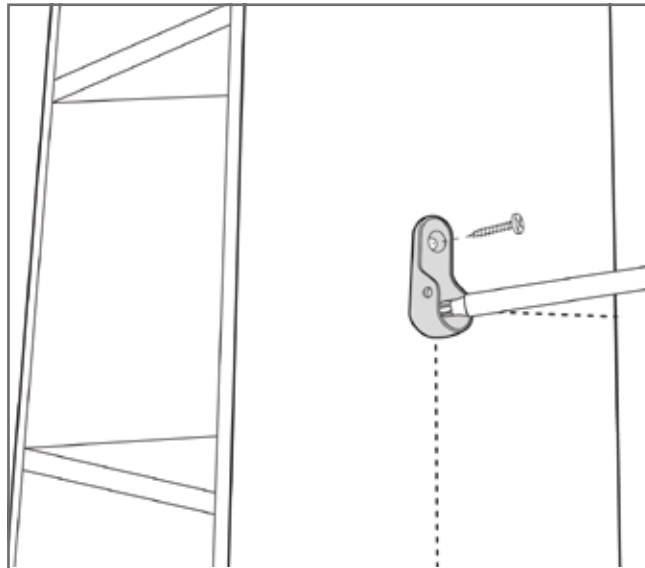
SCREWFIX
wardrobes.com

V1

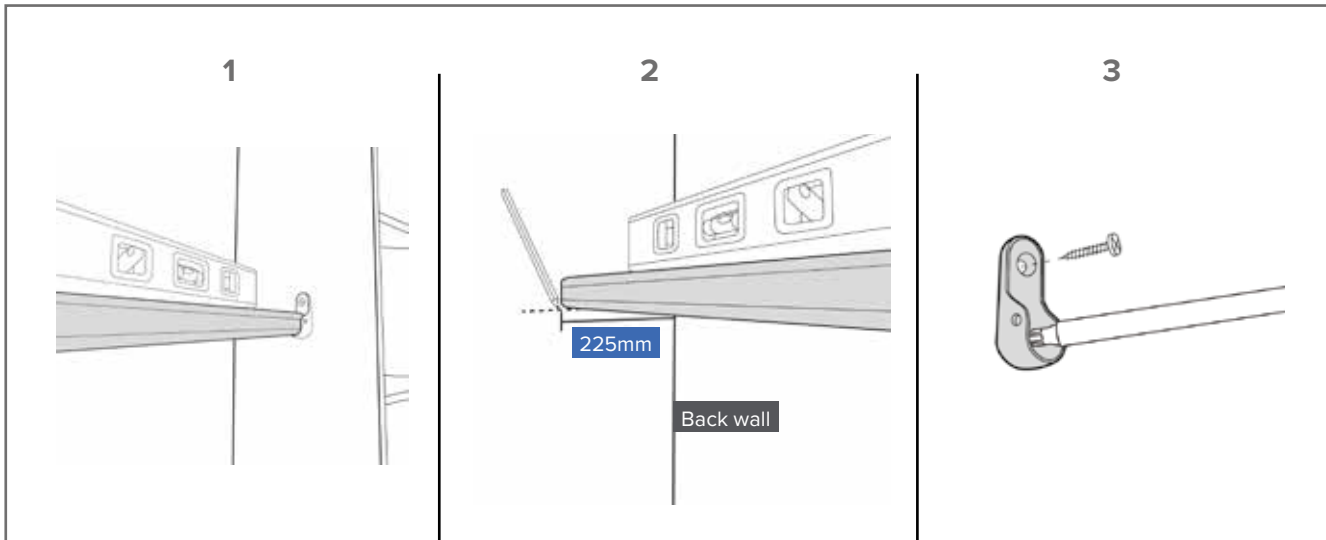




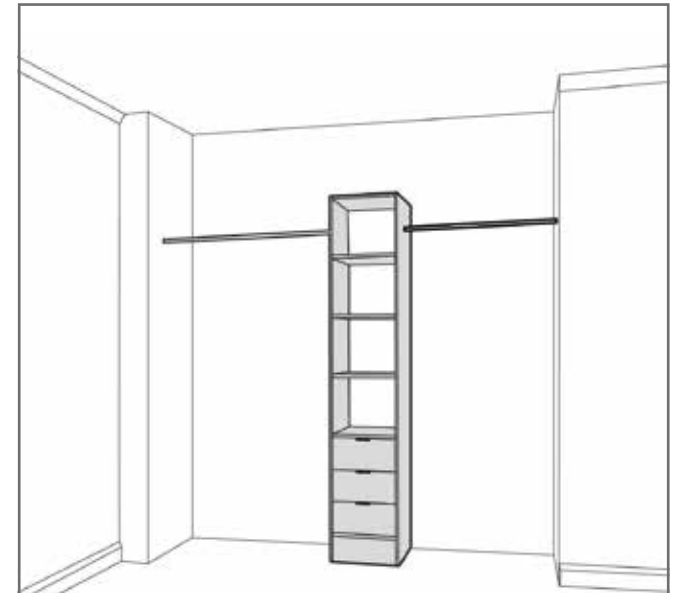
5 Mark the position of the hanger bar. By measuring in 225mm to the centre of the tower unit.



6 Fix first bracket through both holes. (We recommend 16mm screws).



7 Fitting the second hanger bar. 1- Place hanger bar into first bracket and level up. 2-Make sure to mark position on the side wall 225mm from the back wall. 3-Then fix into position.



8 Repeat 3-7 for remaining hanger bars.