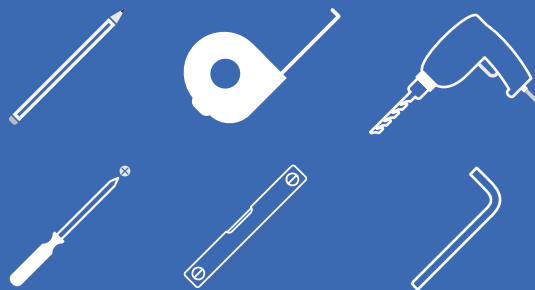


HOW TO FIT SLIDING DOORS

Assembly Instructions

TOOLS REQUIRED:

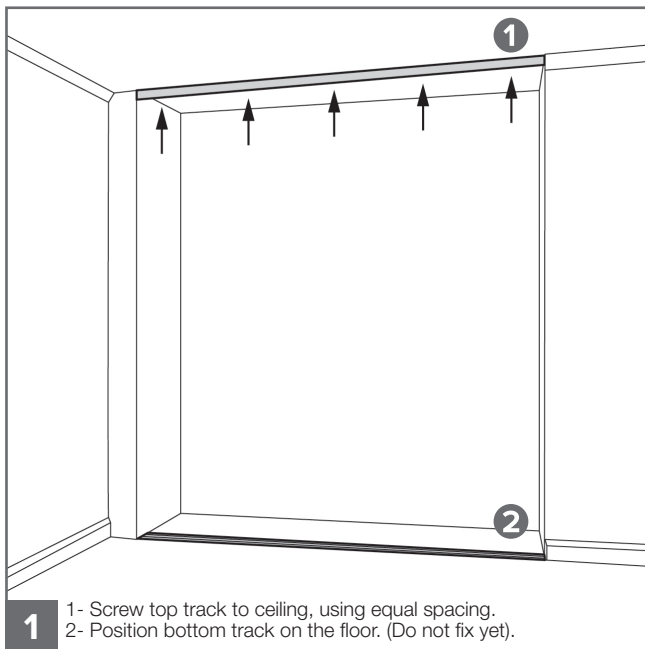


! Please check your opening for any hidden electrical wires and water pipes before / screwing.

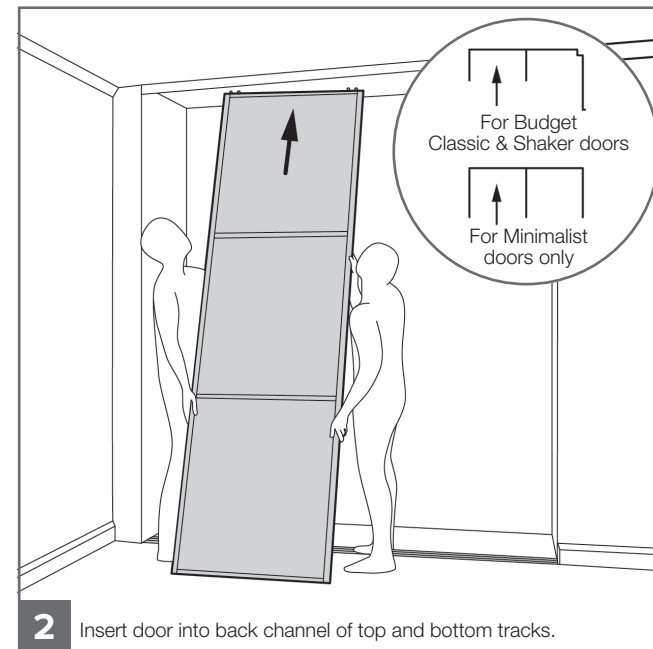
⊘ Screws not supplied. Use suitable screws and plugs.

SCREWFIX
wardrobes.com

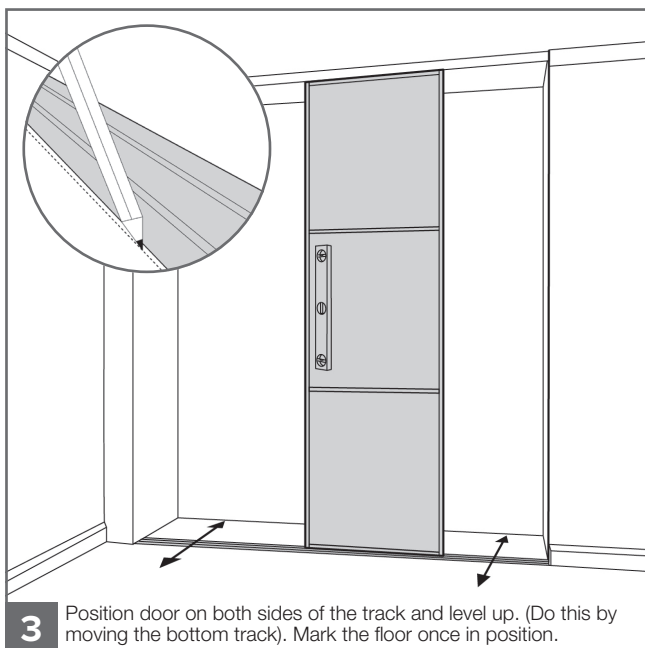
V3



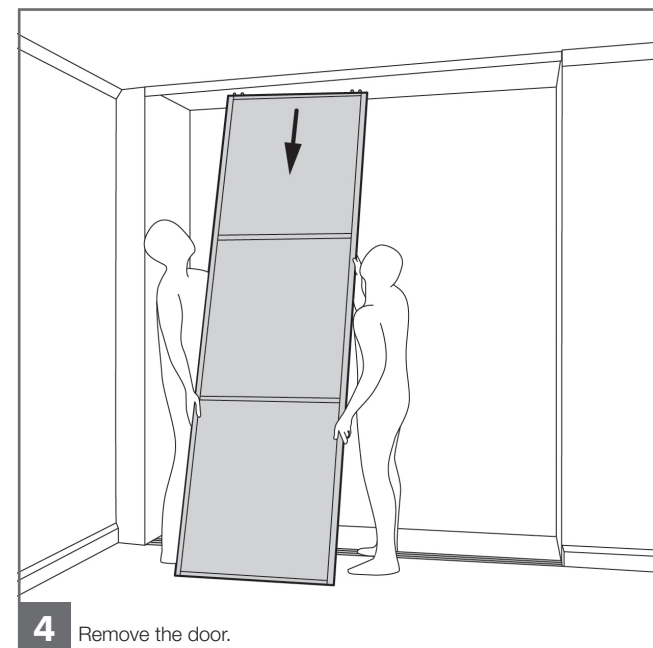
- 1** 1- Screw top track to ceiling, using equal spacing.
2- Position bottom track on the floor. (Do not fix yet).



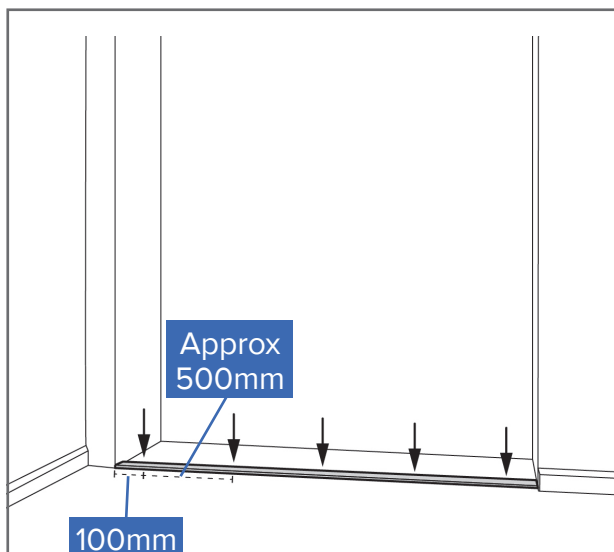
- 2** Insert door into back channel of top and bottom tracks.



- 3** Position door on both sides of the track and level up. (Do this by moving the bottom track). Mark the floor once in position.

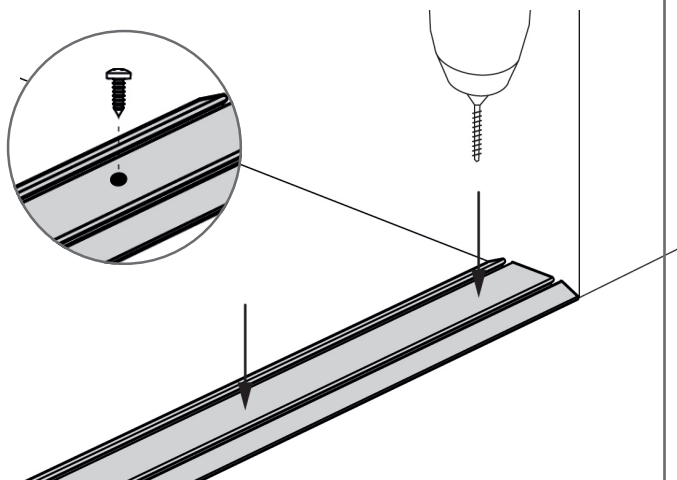


- 4** Remove the door.

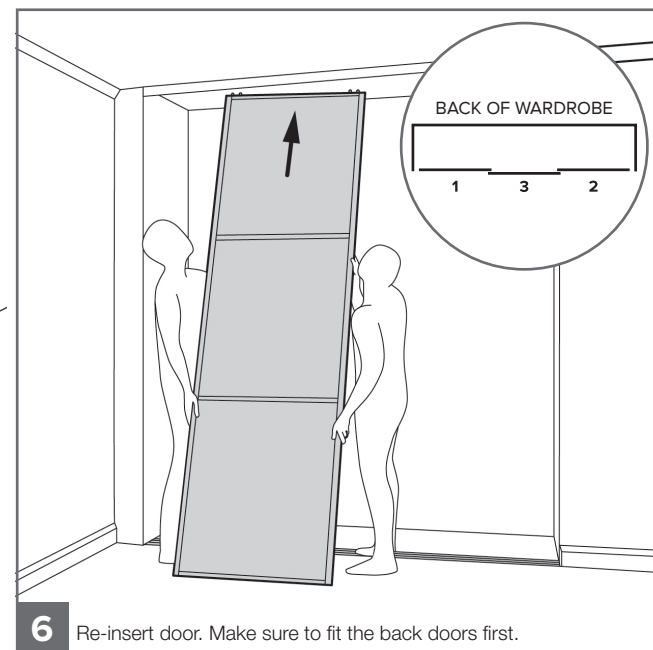


- 5** For all track types, measure in 100mm from wall and then space out evenly across the length of the track (approx 500mm).

FOR BUDGET, CLASSIC, SHAKER & MINIMALIST DOORS

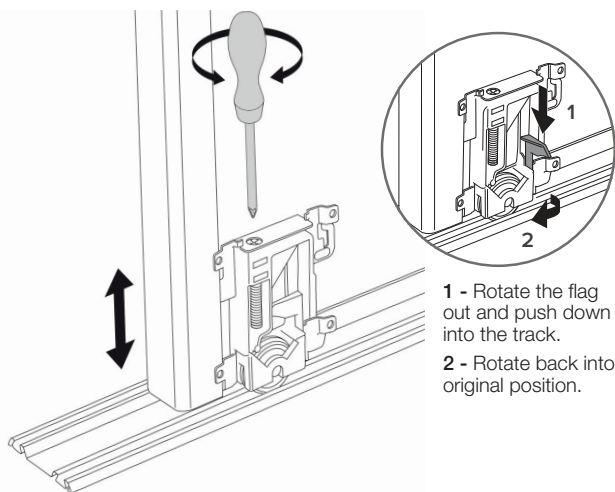


After marking where the drill holes will be, drill through the track into the floor. Fix by screwing into the floor using suitable fixings.
(You can use 'double sided foam tape' to secure bottom track if preferred).



- 6** Re-insert door. Make sure to fit the back doors first.

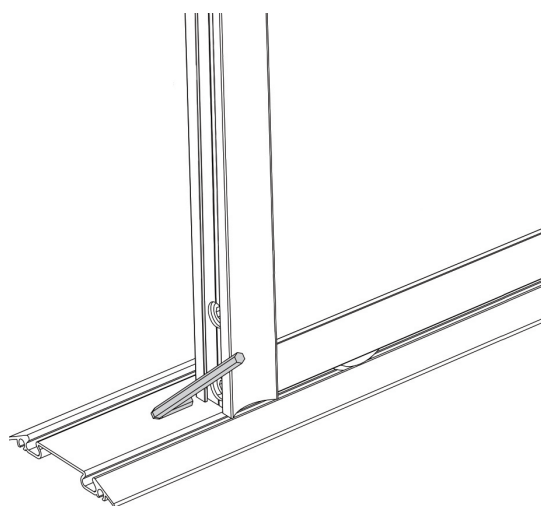
FOR BUDGET, CLASSIC & SHAKER DOORS



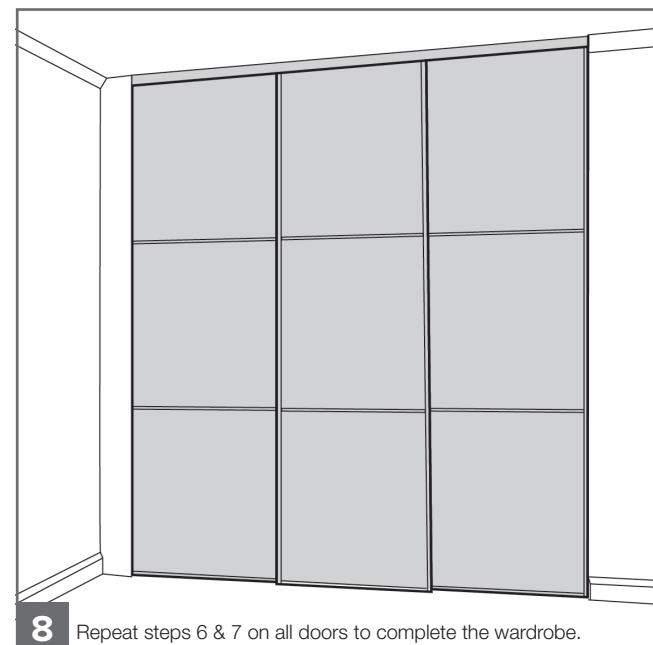
- 1** - Rotate the flag out and push down into the track.
2 - Rotate back into original position.

- 7** Adjust the bottom wheels using a screwdriver, altering the height and angle of each door to suit your space. Turn the screw clockwise to raise the door and anti-clockwise to lower the door.

FOR MINIMALIST DOORS ONLY



Adjust the bottom wheels using a 4mm allen key, altering the height and angle of each door. **Note:** Adjust the bolt closest to the floor.



- 8** Repeat steps 6 & 7 on all doors to complete the wardrobe.